



ERA-NET **SUSAN**

Workshop Engaging Stakeholders

Mónica de Prado, WP5 deputy- ELIKA, Basque Country, Spain

Katrien Broekaert & Marijke Hunninck, WP5 coordinator - ILVO,
Flanders, Belgium



Mid-term cofunded Projects Seminar
10-11th April 2019, Wageningen (Netherlands)



EUROPEAN RESEARCH AREA ON SUSTAINABLE ANIMAL PRODUCTION



The ERA-net Cofund SusAn is funded by European Union's Horizon 2020 Research and Innovation programme under grant agreement n° 696231

Index

1. Why are stakeholders important for SusAn?
2. Analysis of the questionnaires (2017 and 2018)
3. Who are the stakeholders?
4. Guidelines to engage stakeholders
5. Team Exercise

1. Why are stakeholders important?

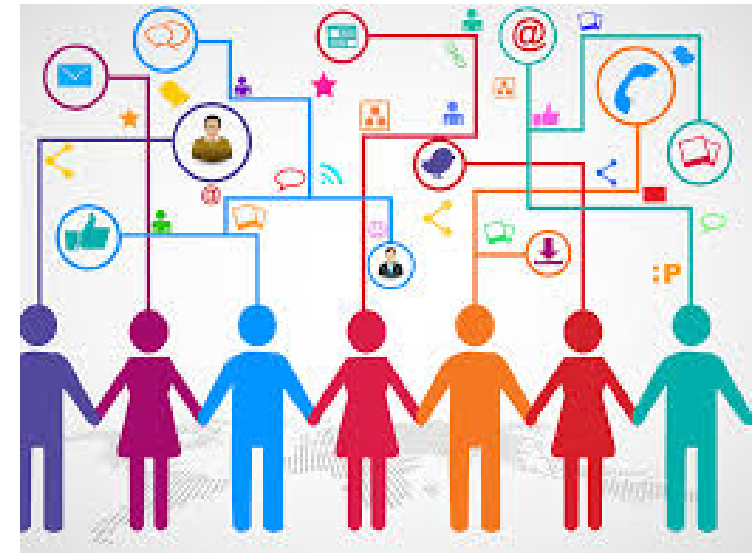
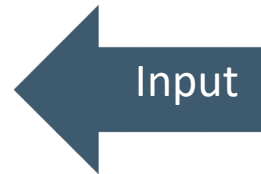
Involvement of stakeholders in ERA-NETs and its' funded research projects is a “must” for the relevance and impact of a project/network.



1. Why are stakeholders important?



SuSI
ReDiverse
SusPig
FreeWalk
SUSTAINBEEF
AnimalFuture
SusTradeOff
BPRACTICES
SusPigSys
SusSheP
PEGaSus



Stakeholders

- European
- National/ regional
- International



2. Analysis of the questionnaires

First questionnaire-2017 (at the start of the projects)

- Identification of European/national/regional stakeholders
- Analyse their interest, influence, impact on your projects and your expectations

Second questionnaire -2018 (at mid-term)

- Update the stakeholders
- Identification of difficulties in the stakeholders involvement



Questionnaire 1: Stakeholders May 2017

The purpose was the creation of a stakeholders map, which makes it able for the projects and the ERA-Net SusAn to achieve a target communication towards stakeholders.

European Stakeholders



Commercial

- **ATF:** Animal Task Force
- **CEETTAR:** European organisation of agricultural and rural contractors
- **EMB:** European Milk Board
- **EPP:** European Pig producers
- **EPSPA:** European Pig Selection and Production Association
- **FABRE-TP:** European farm animal breeding
- **FACE Network:** Farmhouse and Artisan Cheese & Dairy Producers European Network
- **FESSAS:** Fédération Européenne pour la Santé Animale et la Sécurité Sanitaire
- **FoodDrinkEurope:** represents the European food and drink industry
- **UECBV:** European Livestock and Meat Trades
- **UEAPME:** The European Association of Craft, Small and Medium-sized Enterprises



Farmer Association

- **CEJA:** European Council of Young Farmers
- **COPA-COGECA:** Committee of Professional Agricultural Organisations – COPA and: General Committee for Agricultural Cooperation in the European Union - COGECA
- **ELO:** European Landowners
- **Via Campesina:** European Coordination
- **CELCAA:** the European Liaison Committee for Agricultural and Agri-Food



Trade

- **EU Commerce**
- **SACAR:** Joint Secretariat of Agricultural Trade Associations



Research

- **CIRAD:** Agricultural research for development
- **EAAP:** European Federation for animal science
- **TECALIMAN:** Centre Technique de l'Alimentation Animale, France
- **ERPA:** Educational Researches and Publications Associations
- **EUFETEC:** European Feed Technology Centre
- **Global Research Alliance**



Environmental

- **EEB:** European Environmental Bureau. 150 member organisations
- **ENFCP:** The European Forum on Nature Conservation and Pastoralism



European Commission and Member States

- **SCAR**: Standing Committee on Agricultural Research
- **CWG-AHW**: Collaborative Working Group European Animal Health & Welfare Research
- **CWG-SAP**: Collaborative Working Group Sustainable Animal Production
- **EIP-Agri**: the agricultural European Innovation Partnership
- **ERA-Net ICT-Agri**
- **ERA-Net CORE Organic**
- **ERA-GAS, ERA-NET**: on gaseous emissions mitigation
- **FACCE JPI**: Joint Programming Initiative on Agriculture, Food Security and Climate Change
- **ERA-platform**
- **JPI HDHL**: Joint Programming Initiative a Healthy Diet for a Healthy Life
- **JPI AMR**: Joint Programming Initiative on antimicrobial resistance



COORDINATOR
BLE (Germany)



Health

- **EPHA:** European Public Health Alliance. 104 member organisations
- **IFAH-Europe:** International Federation for Animal Health
- **PAN Europe:** Pesticide Action Network
- **MISCELLANEOUS**
- **EFFAT:** European Federation of Food, Agriculture and Tourism Trade Unions
- **EUFRAS:** European Forum for agricultural and rural advisory services
- **EURAF:** European Agroforestry Federation
- **IFOAM-EU:** European umbrella organisation for organic food and farming



Miscellaneous

- **EFFAT:** European Federation of Food, Agriculture and Tourism Trade Unions
- **EUFRAS:** European Forum for agricultural and rural advisory services
- **EURAF:** European Agroforestry Federation
- **IFOAM-EU:** European umbrella organisation for organic food and farming

SUSTAINBEEF: Co-definition and evaluation of SUSTAINable BEEF farming systems based on resources non edible by humans

Might have influence on impact :



CEETTAR _ EMB
FABRE-TP _ FESSAS
FoodDrinkEurope _ UEAPME



Via Campesina



EU Commerce



EAAP _ ERPA _ EUFETEC



EIP-Agri _ ERA-Net ICT-Agri _ ERA-Net Core Organic _ ERA-GAS _
FACCE-JPI _ ERA-Platform



Most important: have interest and influence



ATF
UECBV



COGECA



CELCAA
SACAR



CIRAD
Global Research Alliance



SCAR
CWG-SAP



ENFCP



EUFRAS
IFOAM-EU

Ecolamb: Holistic Production to Reduce the Ecological Footprint of Meat

Might have influence on impact:



CEETTAR
FESSAS



Via Campesina

Most important: have interest and influence



Animal Task Force
FoodDrinksEurope
UECBV



ECJF
COGECA



IFAH
EPHA



CELAA
EU Commerce



EAAP
EUFETEC
Global Research Alliance



EEB
ENFCP



SCAR _ CWG-AHW _ CWG-SAP _ EIP-Agri _ ERA-Net ICT-Agri _ ERA-Net
Core Organic _ ERA-GAS _ FACCE-JPI _ ERA-Platform _ JPI-HDHL



SusCatt: Increasing productivity, resource efficiency and product quality to increase the economic competitiveness of forage and grazing based cattle production systems

Might have influence on impact :



ELO



CIRAD _ ERPA _ EUFETEC

Most important: have interest and influence



Animal Task Force



EAAP



CWG-SAP
ERA-Net Core Organic



COORDINATOR
BLE (Germany)

FreeWalk: Develop economic sound free walk farming systems elevating animal welfare, health and manure quality, while being appreciated by society

Might have influence on impact :



EMB
FACE _ FoodDrinkEurope
UECBV _ UEAPME



ELO



CELAA _ EU Commerce
SACAR



EUFETEC
Global Research Alliance



SCAR
JPI-HDHL
JPI AMR



EPHA
IFAH
EUFRAS
IFOAM-EU



EUFRAS



COORDINATOR
BLE (Germany)

Most important: have interest and influence



ATF



COGECA



EU COMMERCE



EAAP



CWG-SAP _ EIP-Agri _ ERA-Net Core Organic _
ERA-Platform



EUFRF



EURAF _ IFOAM-EU

AnimalFuture: Steering Animal Production Systems towards Sustainable Future

Might have influence on impact :



EU Commerce



ERA-Net ICT-Agri



EURAF



EURAF

Most important: have interest and influence



ATF



COGECA
Via Campesina



EAAP



SCAR
EPI-Agri



EEB
ENFCP



COORDINATOR
BLE (Germany)

BPRACTICES: New indicators and on-farm practices to improve honeybee health in the Aethina tumida era in Europe

Might have influence on impact :



ATF _ CEETTAR
FESSAS _ FoodDrinkEurope
UEAPME



ELO
Via Campesina



CELCAA
EU Commerce
SACAR



CIRAD _ EAAP
TECALIMAN
ERPA _ EUFETEC
Global Research Alliance



CWG-SAP _ EIP-Agri
ERA-Net ICT-Agri _ ERA-GAS
ERA-Net Core Organic _ ERA-Platform
JPI-HDHL _ JPI AMR



EEB



EPHA _ "MISCELLANEOUS"
IFAH _ PAN Europe
EUFRAS _ EURAF _ IFOAM-EU



EFFAT _ EUFRAS
EURAF
IFOAM-EU



Most important: have interest and influence



FABRE-TP



COGECA

CEJA



SCAR

CWG-AHW

FACCE-JPI

PEGaSUS: (Phosphorus efficiency in Gallus gallus and Sus scrofa), Bridging the gaps in the phosphorus value chain

Might have influence on impact :



ECBV _ UEAPME
CEJA _ EMB _ FACE



CELCAA _ EU Commerce
SACAR



ERPA



EPHA

Most important: have interest and influence



ATF _ EPP
EPSPA _ FABRE - TP



CIRAD _ EAAP
TECALIMAN



SCAR _ CWG-SAP
EPI-Agri _ ERA NET Core Organic
ERA-Platform



EEB

SusTradeOff: Understanding trade-offs between health and efficiency to improve competitiveness and sustainability of animal production by breeding and management

Might have influence on impact :



FESSAS



CEJA _ ELO _ Via Campesina



CELCAA
EU Commerce
SACAR



Global Research Alliance



EIP-Agri _ ERA GAS
FACCE-JPI _ JPI-HDHL



ENFCP



IFOAM-EU



IFOAM-EU



COORDINATOR
BLE (Germany)

Most important: have interest and influence



FABRE-TP
ATF



COGECA



CWG-SAP
CWG-AHW
JPI-AMR



TECALIMAN
EAAP



IFAH

SuSI: Sustainability in pork production with immunocastration

Might have influence on impact :



ATF _ CEEFAR
FABRE-TP _ UEAPME



ERPA
Global Research Alliance



FACCE-JPI
ERA-Platform



IFAH _ EUFRAS

Most important: have interest and influence



EPP
UECBV



CEJA
COGECA



CIRAD
EAAP



SCAR _ CWG-AHW _ CWG-SAP
EIP-Agri _ ERA Net ICT-Agri
ERA Net Core Organic

Rediverse: Biodiversity within and between European red dairy breeds conservation through utilization

Might have influence on impact :



EMB



CELCAA



CIRAD



SCAR _ FACCE-JPI
ERA-Platform
JPI-HDHL



EUFRAS



IFOAM-EU

Most important: have interest and influence



ATF
FABRE-TP



COGECA



EAAP



CWG-AHW _ CWG-SAP
ERA Net Core Organic



COORDINATOR
BLE (Germany)

PigSys: Improving pig system performance through a whole system approach

Might have influence on impact :



EMB



CELCAA



CIRAD



SCAR_FACCE-JPI
ERA-Platform
JPI-HDHL



EUFRAS
IFOAM-EU



IFOAM-EU

Most important: have interest and influence



ATF
EEP
EPSPA
FESSAS



COGECA



EAAP



EEB



SCAR_CWG-SAP
ERA-GAS _ ERA Net ICT Agri
EIP-Agri _ FACCE-JPI



COORDINATOR
BLE (Germany)

SusPig: Sustainability of pig production through improved feed efficiency

Might have influence on impact :



CEETAR _ UECBV



CEJA _ ELO _ Via Campesina



CELCAA
EU Commerce
SACAR



CIRAD
TECALIMAN
ERPE _ EUFETEC



ERA Net ICT Agri
FACCE-JPI _ JPI-HDHL
JPI-AMR



EEB
ENFCP



EUFRAS
EFFAT
EUFRAS _ IFOAM-EU



PAN Europe
EURAF
IFOAM-EU



COORDINATOR
BLE (Germany)

Most important: have interest and influence



FABRE-TP
ATF EEP
EPSPA
FoodDrinkEurope



COGECA



CWG-SAP
CWG-AHW
ERA-Platform



EAAP

SusSheP: Sustainable Sheep Production

Might have influence on impact :



FACE
FoodDrinkEurope
UEAPME



EU Commerce
SCAR
CIRAD



PAN Europe
EFFAT



Global Research Alliance



SCAR
ERA Net Core Organic

Most important: have interest and influence



FABRE-TP



COGEGA
ELO



CELCAA



EAAP



EIP-Agri
FACCE-JPI



EEB



COORDINATOR
BLE (Germany)

SusPigSys: Sustainable Pig production Systems

Might have influence on impact :



TECALIMAN _ EUFETEC

Most important: have interest and influence



EEP



COGECA



EAAP

Other European Stakeholders

- **FreeWalk:** ICAR, ZLTO and ZuivelNL
- **EcoLamb:** Many of the European Animal Welfare Organisations and Foundations
- **AnimalFuture:** National organizations (e.g. INTEROVIC, Spain). NGOs such as Friends of the Earth, WWF, etc. Global round table for sustainable beef / eggs; multi dimensional and multi level approach to sustainability
- **BPRACTICES:** European Professional Beekeepers Association (EPBA), COLOSS (Prevention of honey bee COLony LOSSes) international, non-profit association, European professional beekeepers association; Apimondia - International Federation of Beekeepers' Association
- **PEGaSus:** European Sustainable Phosphorus Platform; <http://premc.org/project/european-sustainable-phosphorus-platfor>
- **SuSi:** COST IPEMA
- **Rediverse:** SAVE-foundation , European Forum of Farm Animal Breeders, Interbull , network of National Coordinators for Animal Genetic Resources (ERFP); European Forum of Farm Animal Breeders (EFFAB)
- **SusShep:** National breeding programme organizations - results can be implemented into the breeding goals for sheep indexes within the EU
- **SusPigSys:** Farm Accountancy Data Network (FADN): a European system of sample surveys conducted every year to collect accountancy data from farms, with the aim of monitoring the income and business activities of EU agricultural holdings
InterPig and AgriBenchMark Pig: international networks of agricultural economists, advisors, producers and specialists who also collect data related to our project
Directorate-General for Agriculture and Rural Development (DG AGRI)



National & Regional Stakeholders

SUSTAINBEEF: Co-definition and evaluation of SUSTAINable BEEF farming systems based on resources non edible by humans

- RESEARCH ORGANISATION: Department Of Agronomy, Food, Natural Resouce, Animals And Environment, University Of Padua
- Smes: Bemefa/Apfaca Feed Producers Representative, Associazione Produttori Carni Bovine (Unicarve), Consorzio Carne Razza Maremmana Bio
- Large Companies: Veviba, Meat Valorisation Group
- Farmer Organisations: Fwa, Farmers Organisation And Associazione Italiana Allevatori
- Services: Fourrages-mieux, Non Profit Organisation
- Agricultural Media: Wallonie Elevage, Main Livestock Media And L'informatore Agrario And Informatore Zootecnico
- Public Authorities: Agriculture Ministry, Development Of Competitive Livestock Farms
- Governemental Organisations: Bord Bia, Ministero Dell'ambiente E Della Tutela Del Territorio, Assessorato All'agricoltura Regione Lombardia
- Consumer Associations: Ab-reoc, Consumers Association And Adusbef And Adiconsum
- Other: Inter-environnement Wallonie



SusCatt: Increasing productivity, resource efficiency and product quality to increase the economic competitiveness of forage and grazing based cattle production systems

- RESEARCH ORGANISATION: Consumption Research In Norway And Centre For Rural Research, Norway
- Smes: Rørosmeieriet (Dairy Company), Individual Farm Businesses
- Large Companies: Tine (Dairy Company)
- Farmer Organisations: National Farmers Union (Nfu), National Beef Association (Nba) And Royal Association Of British Dairy Farmers
- Services: Tine Advisory Service
- Agricultural Media: Buskap (National Farmer Magazine), Farmers' Weekly And Bbc
- Private Funding Bodies: Pasture Fed Livestock Association And Soil Association- Working With Us In This Project
- Governmental Organisations: Defra
- Consumer Associations: Compassion In World Farming, Rspca And Soil Association - All Aiming For Ethical And Sustainable Food Production



Ecolamb: Holistic Production to Reduce the Ecological Footprint of Meat

- RESEARCH ORGANISATION: From Turkey we could invite Global Research Thinktank Centre (GRTC) or The Scientific and Technological Research Council of Turkey (TUBITAK).
- SMEs: Tellioglu Feed and Livestock, Meva Agricultural
- LARGE COMPAGNIES: NAMET
- FARMER ORGANISATIONS: Tire Farmers Cooperative
- AGRICULTURAL MEDIA: Bereket TV, Ciftci TV
- GOVERNEMENTAL ORGANISATIONS: General Directorate of Agricultural Research and Policies (TAGEM)
- CONSUMER ASSOCIATIONS: AB-Reoc, consumers association and ADUSBEP and ADICONSUM
- OTHER: Pendik Veterinary Research Organisation

FreeWalk: Develop economic sound free walk farming systems elevating animal welfare, health and manure quality, while being appreciated by society

- RESEARCH ORGANISATION: ZUIVELNL, RISE, KTBL, ATB (Potsdam), AIIA - Italian Society of Agricultural Engineering, GD Animal Health and NIZO (for better food and health)
- SMEs: ID Agro The Netherlands, Växa Sverige AB , HVL, ZBH (Alsfeld), Stable design and equipment
- LARGE COMPAGNIES: VEVIBA, Meat valorisation group
- LARGE COMPAGNIES: FRIESLAND-CAMPINA, DeLaval International, GEA & DeLaval milking systems, Grana Padano Protection Consortium , Arla. GEA engineering for a better world
- FARMER ORGANISATIONS: European Dairy Farmers (EDF), LRF Mjöljk, German Farmers' Association, DLG, AIA - Associazione Italiana Allevatori, Farmers organisation LTO, DairyNL organization
- SERVICES: ICAR, IFCN, Private Extension Service DLV and Vetvice (Dairy cow housing and husbandry)

FreeWalk: Develop economic sound free walk farming systems elevating animal welfare, health and manure quality, while being appreciated by society

- **AGRICULTURAL MEDIA:** VEEPRO magazine for cattle improvement, Jordbruksaktuellt and Husdjur, Landwirtschaftsverlag GmbH, Agrimedia (see www.vrijloopstallen.nl), Agricultural Journals, Slovensky CHOV; agrobiznis.sk. The journal and webportal can be helpful for the knowledge transfer to farmers and public awareness raising.
- **PUBLIC AUTHORITIES:** BIOTECHNICAL FACULTY, Jordbruksverket, LLH Hessen, LWK NRW, Animal Protection Organisation (Dierenbescherming) and Skal biocontrol, Ministry of Agriculture and Rural Development of SR
- **PRIVATE FUNDING BODIES:** Dairy Industrie and Dairy supply chain organisation (DairyNL)
- **GOVERNMENTAL ORGANISATIONS:** MINISTRY OF AGRICULTURE, BMEL, BLE, Provinces and local municipalities, Ministry of Economic affairs
- **CONSUMER ASSOCIATIONS:** SLOVENIAN CONSUMER ASSOCIATION, Vi konsumenter

AnimalFuture: Steering Animal Production Systems towards Sustainable Future

- RESEARCH ORGANISATION: IFIP-Institut du Porc, ITAVI Institut de la Volaille et de l'aviculture, INIA, Instituto Nacional de Investigación Agrária e Veterinária, Universidade de Évora, Thünen Institut
- SMEs: La prospérité fermière, SICAREV, INTEROVIC, Hermannsdorfer Landwerkstätten,
- LARGE COMPAGNIES: Gebr. Van Beek, Grupo Pastores, SONAE, INTERMARCHÉ
- FARMER ORGANISATIONS: FNPL and FNB (Dairy Farmer organisation and Beef farmer organization), LTO and Nederlandse Vakbond Pluimveehouders, COAG, UPA, ASAJA. National Unions for farmers, Associação de Criadores de Bovinos de Raça Alentejana, ACOS, Deutscher Bauernverband und Bayerischer Bauernverband, National Sheep Association Scotland; National Farmers Union for Scotland; Scottish Crofting Federation. Both represent farmers and crofters with extensive sheep systems in the Highlands & Islands
- SERVICES: Chambre d'Agriculture des Hauts de France, Chambre d'Agriculture AURA,
- AGRICULTURAL MEDIA: Groupe Reussir, la France Agricole, EFE-Agro, Vida Rural, AGROTEC, Bayerisches Wochenblatt, DLG Mitteilungen



AnimalFuture: Steering Animal Production Systems towards Sustainable Future

- PUBLIC AUTHORITIES: Ministry of Agriculture DGER, Ministry of Economic Affairs, Province of Gelderland, MAPAMA, GPP - Gabinete de Políticas e Planeamento do Ministério da Agricultura, Florestas e Desenvolvimento, Bayerisches Staatsministerium für Landwirtschaft und Forstern, Bayerisches Umweltministerium, Highland & Islands Enterprise; Quality Meat Scotland, BMLFUW
- PRIVATE FUNDING BODIES: LKV (Landeskuratorium der Erzeugerringe für tierische Veredelung Bayern), VBPM (verband der bayerischen privaten milchwirtschaft)
- GOVERNMENTAL ORGANISATIONS: MAPAMA (Regional agricultural and environmental government departments)
- CONSUMER ASSOCIATIONS: OCU, FACUA, DECO (Portuguese consumer association),
- OTHER: The NGO's 'Dierenbescherming' and 'Natuur en Milieu', Agri-environmental NGOs: e.g. Fundación Entretantos, Arbeitsgemeinschaft bäuerliche Landwirtschaft (works on topics to strengthen small scale farming systems)

BPRACTICES: New indicators and on-farm practices to improve honeybee health in the *Aethina tumida* era in Europe

- RESEARCH ORGANISATION: Facultad de Veterinaria, Universidad Complutense (Madrid, Spain), Institut für Zoologie, Karl-Franzens-Universität Graz, Institute of Virology, University of Veterinary Medicine, Faculty of Agriculture and Life sciences, Veterinary faculty University of Ljubljana, TUBITAK
- SMEs: CALIER, Holders of registrations of veterinary medicinal products, especially organic acid (oxalic, formic acid) and essential oil (Thymol) based preparations
- LARGE COMPAGNIES: Chemicals Laif s.p.a – Industria chimico farmaceutica veterinaria. Producer and Registration holder of Api Life VAR and Api Bioxal anti varroa Treatments, Andermatt Biocontrol AG, Producer and Registration holder of Thymovar, Oxuvar, MAQS, Formivar anti varroa Treatments, Medex
- FARMER ORGANISATIONS: Austrian national and federal Chambers of Agriculture, Slovenian Beekeeping Association, Apislavia- Federation of Beekeeping Organizations; National Beekeepers Orgainzations
- SERVICES: ASAJA, National and Federal beekeeping associations, Slovenian Beekeeping Association, Lega srl Costruzioni Apistiche

BPRACTICES: New indicators and on-farm practices to improve honeybee health in the *Aethina tumida* era in Europe

- **AGRICULTURAL MEDIA:** ASAJA, Bienenaktuell, Stocker Verlag Graz, Kmečki glas, Informatore Agrario, Journals of National beekeeping Associations, American Bee Journal
- **PUBLIC AUTHORITIES:** Official veterinarians of the federal provinces of Austria, Veneto Region, Governmental bodies - Ministry for Agriculture
- **PRIVATE FUNDING BODIES:** TUBITAK
- **GOVERNEMENTAL ORGANISATIONS:** BUNDESMINISTERIUM FÜR LAND- UND FORSTWIRTSCHAFT, UMWELT UND WASSERWIRTSCHAFT, Abteilung Präs. 8, Forschung und Entwicklung, Ministry of Agriculture, Forestry and Food, Ministry of Health, TAGEM
- **CONSUMER ASSOCIATIONS:** Zveza potrošnikov Slovenije, ADICONSUM
- **OTHER:** TAB

PEGaSus: (Phosphorus efficiency in Gallus gallus and Sus scrofa), Bridging the gaps in the phosphorus value chain

- RESEARCH ORGANISATION: Förderverein Bioökonomieforschung, CREA - Politiche e Bioeconomia, SLU Swedish Univ of Agricultural Sciences, JTI – Swedish Institute of Agricultural and Environmental Engineering, Environmental technology, Teagasc, Republic of Ireland, The Pig Farmers Associations
- SMEs: Hybridschweinezuchtverband Nord/ Ost e.V. (HSZV), Devenish Nutrition, Companies developing pig feeding systems and silos for cereal storage (airtight)
- LARGE COMPAGNIES: PIC, COBB-Vantress, Moy Park Ltd, Enzyme producing (selling) companies
- FARMER ORGANISATIONS: Coldiretti and Confagricoltura (Italian Farmer Organisation), LRF Federation of Swedish Farmers, Pig ReGen and ADHB pigs
- SERVICES: Sigill Kvalitetssystem AB, IP Standard (Swedish Standards organization), Pig farmers association, DI (landbrug), og andre sammenslutninger, DAKOFO

PEGaSus: (Phosphorus efficiency in Gallus gallus and Sus scrofa), Bridging the gaps in the phosphorus value chain

- AGRICULTURAL MEDIA: LAND agriculture, Danish agricultural magazines
- PUBLIC AUTHORITIES: IZSLER, Istituto Zooprofilattico Sperimentale della Lombardia e dell'Emilia Romagna
- PRIVATE FUNDING BODIES: Fondazione Cariplo, FORMAS Swedish Research Council
- GOVERNMENTAL ORGANISATIONS: Regione Emilia Romagna and Regione Lombardia, Department of Agriculture, Environment and Rural Affairs (DAERA) for Northern Ireland, LFST; MFVM
- CONSUMER ASSOCIATIONS: Federconsumatori, SSNC, Swedish Society for Nature Conservation

SusTradeOff: Understanding trade-offs between health and efficiency to improve competitiveness and sustainability of animal production by breeding and management

- RESEARCH ORGANISATION: Anses, Research Councils UK, BBSR, Copenhagen University_Veterinary research domains
- SMEs: BreedForFood, Verbeek Hatchery and Plumex
- LARGE COMPAGNIES: NUTRECOPIE, Genus, Innovis, Cobb, Harbro (animal nutrition), DuPont Denmark, Cobb Vantress and Hendrix Genetics
- FARMER ORGANISATIONS: EFFAB, CIPC, CIDEF, Agriculture and Horticulture Development Board UK; National Farmers Union UK, Dansk Fåreavl (Danish Sheep Breeders, France Génétique Elevage
- AGRICULTURAL MEDIA: Farmers Weekly, Maskinbladet
- PRIVATE FUNDING BODIES: Gates foundation, GUDP, danish ministry for food and environment
- GOVERNEMENTAL ORGANISATIONS: DEFRA, French Ministry of Agriculture
- OTHER: NGO's (eg animal welfare organizations), National Farmers Union - influential in government policy and advocate of sustainable animal production



SuSI: Sustainability in pork production with immunocastration

- RESEARCH ORGANISATION: IFIP - Institut du porc , Aarhus University, Copenhagen University, Department of Agricultural Economics, Ugent
- SMEs: Kmetija Varga (breeder of breeding boars), KZ Sevnica (cooperative), Pršutarna Lokev na Krasu d.o.o., Transporters and butchers, Ter Beke
- LARGE COMPAGNIES: Danish Crown, Farme Ihan d.d. (largest pig producer in Slovenia), Panvita d.d. (second larger pig producer in Slovenia), Farme Ihan d.d. (big pig producer), Panvita d.d. (big pig producer), Celjske mesnine d.d.; Farme Ihan d.d., Zoetis; Tönnies, vion, largest slaughterhouse, Colruyt
- FARMER ORGANISATIONS: Danish Agriculture and Food Council, SLOVENSKA ZVEZA PRAŠIČEREJCEV (Pig farmer association), Društvo rejcev krškopoljskih prašičev (association of pig breeders of local pig breed Krškopolje), SLOVENSKA ZVEZA PRAŠIČEREJCEV (association of pig producers), Zveza združenj rejcev prašičev Slovenije, Deutscher Bauernverband, Zentralverband dt. Schweineproduktion (ZDS), POLSUS, Polish Pig Breeders and Producers Association, Krajowa Rada Izb Rolniczych, ZLTO (owner vion), Ito, Boerenbond
- SERVICES: Kmetijsko gozdarska zbornica Slovenije (Chamber of Agriculture and Forestry of Slovenia), KGZS (Chamber of agriculture is other approved organisation in pig breeding), Bundestierärztekammer e. V. (BTK),
- AGRICULTURAL MEDIA: Landbrugsavisen, Kmečki glas (weakly newspaper), Kmetovalec (newspaper), Agrobiznis (journal), RTV Slovenija (radio, television), SUS, topagrar,

SuSI: Sustainability in pork production with immunocastration

- PUBLIC AUTHORITIES: Ministrstvo za kmetijstvo, gozdarstvo in prehrano (Ministry for agriculture, forestry and food), Uprava za varno hrano, veterinarstvo in varstvo rastlin (UVHVVR) (Administration of the Republic of Slovenia for Food Safety, Veterinary Sector and Plant Protection), MKGP - Ministry of agriculture, forestry and food (is financing the project), Uprava RS za varno hrano, veterinarstvo in varstvo rastlin (official authority for veterinary issues), Landestierschutzbeauftragte Baden-Württemberg (animal welfare), Ministry of Agriculture and Rural Development, Department of Food Safety and Veterinary,
- PRIVATE FUNDING BODIES: H. Wilhelm Schaumann Stiftung --> promotes animal science - also young scientists
- GOVERNEMENTAL ORGANISATIONS: KGZS (agricultural chamber), Veterinary chamber
- CONSUMER ASSOCIATIONS: Zveze potrošnikov Slovenije (Slovenian consumer association), Bundesverband der Verbraucherzentralen, Tierschutzbund
- OTHER: Zadružna zveza Slovenije (association of cooperatives), ZKŽP - Zbornica kmetijskih in živilskih podjetij (chamber of food industry), QS Qualität und Sicherheit GmbH, DLG --> dissemination

Rediverse: Biodiversity within and between European red dairy breeds conservation through utilization

- RESEARCH ORGANISATION: Lund University, Centre of Genetic Resources the Netherlands (CGN) - aims at conserving genetic resources, in- and ex-situ.
- SMEs: GENO-Norway, National/regional AI organizations, Viking Denmark, FABA in Finland, Växa Sverige in Sweden, VikingGenetics, Geno
- LARGE COMPAGNIES: Dairy and slaughter industry, ARLA and Valio, Dairy processing industry, Arla, CRV
- FARMER ORGANISATIONS: National breed associations, European Red Dairy Breeds Association, Cattle producers' organization
- SERVICES: Nordic Cattle Genetic Evaluation, Nordic Cattle Genetic Evaluation, Data management organizations such as Nordic Cattle Genetic, Evaluation (NAV) are needed
- AGRICULTURAL MEDIA: National agricultural magazines and breed associations member news letters/magazines and homepages, Veeteelt (<http://veeteelt.nl/>) - magazine read by ~75% of Dutch dairy farmers.
- PUBLIC AUTHORITIES: Board of agriculture
- GOVERNEMENTAL ORGANISATIONS: Ministry of Environment and, Food of Denmark - manages the, funding body providing funding

PigSys: Improving pig system performance through a whole system approach

- RESEARCH ORGANISATION: DAFA, FLI, INRA and IFIP, Latvia Pig Breeder Association, RISE (Research Institute of Sweden), Centre for Innovation Excellence in Livetsock
- SMEs: Hölscher & Leuschner (already sdvising the project), Asserva, Groupe Christien, Quality Meats Scotland
- LARGE COMPAGNIES: Buildings companies, Sensor companies, Veterinary Consultancies
- FARMER ORGANISATIONS: ZSD, DBV, Terrena, Chambres d'Agriculture de Bretagne, The Federation of Swedish Farmres (LRF), Swedish Pig Producers, AHDB, NPA, NFU
- SERVICES: VUSA e.V., MIXSCIENCES, Union Invivo, Food and Veterinary Service, Focus on Nutrients
- AGRICULTURAL MEDIA: SUS - Schweinezucht und Schweinemast, Porc Magazine Editions du Boisbaudry, Réussir Porc, Agricultural journal “Agrotops”, ALT, Grisföretagaren, Pig Farmer, Farmers Weekly
- PUBLIC AUTHORITIES: ADEME
- GOVERNEMENTAL ORGANISATIONS: BMEL, BMU, Swedish Board of Agriculture (SbV), BBSRC, Defra
- CONSUMER ASSOCIATIONS: Bundesverband für Verbraucherschutz, Tierschutzbund



SusPig: Sustainability of pig production through improved feed efficiency

- RESEARCH ORGANISATION: Spain National Projects, Animalia, Agricultural University in Sweden, INRA
- SMEs: Norsvin, Lantmännen (a feeding Company), biotechnology SME
- LARGE COMPAGNIES: Sanchez Romero, Spanish Iberian Pig producer, TopigsNorsvin (breeding company), Breeding organizations in pigs, rabbits and poultry; feeding companies; technical institutes
- FARMER ORGANISATIONS: Sveriges Grisföretagare (Swedish pig farmers' association), pig breeding roundtable
- SERVICES: Gård&Djurhälsan (Advisory service, animal health)
- AGRICULTURAL MEDIA: Grisföretagaren (journal for pig farmers), Journées de la recherche porcine
- PUBLIC AUTHORITIES: Formas (the Swedish funder)
- PRIVATE FUNDING BODIES: Stiftelsen lantbruksforskning

SusSheP: Sustainable Sheep Production

- RESEARCH ORGANISATION: INIA, Irish farmers association and sheep Ireland, University of Edinburgh - Roslin Institute/Vet school, Norsk Sau - og geiteavlslag (breeding Association) and Seksjon for Småfeforskning, NMBU
- SMEs: Meat Industry Ireland; IBEC,
- LARGE COMPAGNIES: IMV (France) and Minitube (Germany), Signet, Norsk Sau og Geit
- FARMER ORGANISATIONS: IFA, ICSA Represent sheep farmers in Ireland, National Farmers Union, Irish farmers association (IFA) and Irish cattle and sheep association (ICSA) , National Farmers Unions (on sheep systems efficiency), National Sheep Association (on sheep systems efficiency), Norsk sau - og geit
- SERVICES: TGM software in Northern Ireland
- AGRICULTURAL MEDIA: Ireland - The Irish Farmers Journal www.farmersjournal.ie/ ; Agriland www.agriland.ie; farmireland <http://www.independent.ie/business/farming/>, Irish farmers journal & farming independent, Irish Farmers Journal, Agriland, Farmers Weekly, Scottish Farmer, Norsk Sau og geit

SusSheP: Sustainable Sheep Production

- PUBLIC AUTHORITIES: Ireland - Bordbia www.bordbia.ie
- PRIVATE FUNDING BODIES: AHDB, QMS
- GOVERNEMENTAL ORGANISATIONS: Environmental Protection agency; National body responsible for protection of the environment, Irish department of agriculture, food and marine - carbon footprint for sheep enterprises, Bord Bia, Scottish Government
- CONSUMER ASSOCIATIONS: Consumer association of Ireland <https://thecai.ie/>. Consumer groups are having an increasing impact on how we produce and market our food.
- OTHER: Sheep breed societies

SusPigSys: Sustainable Pig production Systems

- RESEARCH ORGANISATION: POV (Dutch Pig Farmer Union), Veterinary University; Research station Raumberg Gumpenstein, Centre for Innovation Excellence in Livestock, UK organisation with many relevant partners, Deutsche Agrarforschungsallianz (DAFA)
- SMEs: KDV (sustainable pork chain), Hütthaler, Berger, Midland pig producers' and 'Easyherd (pigs), pig farmers and their agricultural advisers
- LARGE COMPAGNIES: REWE, Spar - influence on standards, HK Scan, Feed suppliers (ABN, For Farmers, Devonish, Primary feeds), breeding companies (JSR, PIC Rattlerow)
- FARMER ORGANISATIONS: VLV, VÖS, Suomen Sikayrittäjät ry (Finnish Pig Producers), National pig Association, National Farmers Union, ZDS: Zentralverband der deutschen Schweineproduktion e.V., ISN: Interessengemeinschaft der Schweinehalter Deutschlands e.V., VzF GmbH: Verein zur Förderung der bäuerlichen Veredlungswirtschaft
- SERVICES: Animal health Service (TGD), Agricultural Chamber, Pig Veterinary society , Assured food standards
- AGRICULTURAL MEDIA: VÖS zeitschrift; TOP Agrar / SUS österreich, Maaseudun Tulevaisuus and KM-Vet, Pig world - magazine for the pig industry,
- Farmers Weekly - a highly regarded magazine supporting farming , The Pig Site - internet support for the industry, top agrar, SUS



SusPigSys: Sustainable Pig production Systems

- **PUBLIC AUTHORITIES:** Ministry of Agriculture, Finnish Food Safety Authority Evira, Environment Agency and Animal and plant health agency, 2 bodies 'policing' environment and animal health /welfare policy, respectively
- **PRIVATE FUNDING BODIES:** Soil Association - major charity for the organic sector (productions and consumer aspects), Agrifoods Charity Partnership - Charities working together to support British Food and Farming
- **GOVERNEMENTAL ORGANISATIONS:** Landschafftleben, DEFRA, Farm Animal Welfare Council
- **CONSUMER ASSOCIATIONS:** Consumentenbond, Compassion in World Farming & RSPCA (Royal Society for the prevention of cruelty to animals), Soil Association
- **OTHER:** VierPfoten/Four Paws; WWF; NGO on animal welfare/environmental impact, Animal Health ETT, AHDB pork - the UK levy board, British Society of Animal Science (BSAS) and Institute of Farm Managers (IFM)



Most important national stakeholders

- **SusTainbeef:** Fédération Inter-Environnement Wallonie, Bord Bia, Von Thünen, Ministro dell'ambiente , Regione Lombardia, Scar,
- **SusCatt:** TINE advisory service, Pasture Fed Livestock Association
- **FreeWalk:** ZUIVELNL, Växa Sverige AB, LRF Mjölke, Jordbruksaktuellt, KTBL, AIA - Associazione Italiana Allevatori, Animal Protection Organisation, Slovak Holstein Association, Association of Beef Cattle Breeders Slovaki, Slovensky CHOV, University of Kentucky
- **EcoLamb:** TELLIOGLU
- **AnimalFuture:** Gebr Van Beek, Forfarmers, Ito, NVPluimveehouders, Dierenbescherming, INIA, INTEROVIC, Fundación Entretantos, Gabinete de Políticas e Planeamento, Thünen Institut, Quality Meat Scotland, Highland & Islands Enterprise, National Farmers Union for Scotland, National Sheep Association Scotland, Scottish Crofting Federation, STEGER Angelika Dipl-Ing, MinR, GE, ESB (Abteilungsleiter-Stellvertreterin), BMLFUW, Umweltbundesamt, Bio-austria, Biofleisch, La Prosperité
- **Bpractices:** Facultad de Veterinaria, Universidad Complutense, Madrid, Spain, Österreichischer Imkerbund, Slovenian Beekeeping Association, Faculty of Agriculture and Life Sciences, Kmečki gla , Associazione Idee e Materie in Gioco-via montevideo 2/6 Genova ITALY, Regione del Veneto, European professional beekeepers association
- **Pegasus:** FBF, CREA, Regione Emilia Romagna, Regione Lombardia, Coldiretti, FORMAS, LRF, SLU, JTI, SSNC, DAERA, Pig Farmers Associations, feed producing companies, feeding systems and cereal storage silos (airtight)

Most important national stakeholders

- **SusTradeOff:** BreedForFood, EAAP & FABRE-TP, Anses, cipc, Agriculture and Horticulture Development Board, Økologisk Landsforening, France Genetique Elevage, SEGES, Hendrix-genetics, Cobb-vantress
- **Susi:** IFIP-Institut du Porc, Aarhus University, Copenhagen University Danis Crown, Ministrstvo za kmetijstvo, Gozdarstvo in prehrano (Ministry for agriculture, forestry and food), KGZS, Uprava za varno hrano, Veterinarstvo in varstvo rastlin; Farme Ihan, Celjske mesnine, Zoetis, POLSUS - Polish Pig Breeders and Producers Organisation, Public Extensions Services, Ministry of Agriculture and Rural Development, Boerenbond, VLAIO, Colruyt, Ter Beke, Department of Agricultural Economics, Ugent
- **Rediverse:** The AI-organizations in the different countries; Sweden <https://www.vxa.se/>; Finland <http://www.faba.fi/sv>; Denmark <http://www.vikinggenetics.dk/>; Swedish red association <http://srb-foreningen.se/>; Nordic Cattle Genetic, CRV, Centre for Genetic Resources the Netherlands
- **PigSys:** DAFA, Asserva, Latvia Pig Breeder Association, CIEL, AHDB, NPA, Farmer Building Companies
- **SusPig:** All Iberian pig producers, Norsvin, Sveriges Grisföretagare, Breeding organizations
- **SusShep:** TGM, Sheep Ireland, IFA, Department of agriculture food and the marine, Irish Farmers Association, Irish Cattle and Sheep farmers association, Irish Farmers Journal, Signet, Norsk sau og geit
- **SusPigSys:** POV, VÖS, Hütthaler, Berger-schinken, Landwirtschaftskammer, Animal Health ETT, AHDB pork, ZDS bonne

What would you expect from your stakeholders?

- Comments and suggestions to our plans, and suggestions to how we should inform about our project and disseminate the outcome of our research
- Our project proposes to explore new scenarios for meat production. Stakeholders, mainly farmers representatives and meat trades will be mobilised to define key factors to take into account to define these scenarios and to validate the developed scenarios
- EFFAB, to be informed and to distribute, Interbull, to share knowledge on cross country breeding evaluations; the information to the EFFAB network
- Assistance in dissemination (EAAP) and assistance (ATF through members) in deployment
- Clearly indicate what they think about the project, and what they expect from it.
- Help, communication, exchange of ideas, critical view on our methodology, help with dissemination, independent evaluation of the process and progress
- Pro & cons immunocastration; communication strategy
- Expertise and opinions from the respective stakeholder group. Help in setting priorities.
- Input and cooperation

What would you expect from your stakeholders?

- Input on practical and political implications of the project. Support in dissemination.
- linking research to industry; lobbying animal research
- Support in implementing Good Beekeeping Practice (GBP) to get maximal impact in beekeeping sector (organic and not organic beekeeping)
- An honest view of our project.
- We would expect valuable feedback in order to conduct our research more efficiently and then to maintain our contact for later effective dissemination of the outcomes.
- to advise project orientation and result uptake at mid term (18 months)
- Advise on outcomes and outputs of our project - link with interested parties to exploit our results

What would you like to ask to these stakeholders regarding your project / Which question would you like to be answered by these stakeholders regarding your project?

- Factors to take into account to define innovative scenarios of meat production, contribution to the validation of the scenarios developed
- Questions regarding international evaluations, also genomic evaluations; products
- How to motivate breeding organizations to further coordinate their breeding programs for the numerically smaller breeds.
- What do you see as added benefit of our project?
- What should we aim to have achieved by the end of the project?
- What are needs of farmers?
- What are expectations of society?
- Do we have equipment to monitoring traits related to our projects goals?
- Experience: Interest and dissemination
- What positive characteristics should future pig production systems have from your perspective?
- How could we facilitate change of systems towards sustainable farming goals?
- How to motivate consumers to support more sustainable farming?
- Their interest in the project and how we can improve (add sections)
- What is the priority list in terms of aspects of resource efficiency?

What would you like to ask to these stakeholders regarding your project / Which question would you like to be answered by these stakeholders regarding your project?

- EPBA: Which are the main points of GBP's for professional beekeepers to be recommended and implemented in beekeeping operations to deal with the bee diseases dealt with in the project of BPRACTICES?
- Organic beekeeping: question is the same as above but valid for hobbyists, sideline and professional organic beekeepers
- Apimondia: which are the main points for Apimondia to be recommended and implemented in beekeeping operations to deal with the bee diseases dealt with in the project of BPRACTICES?
- Is this project novel and will it likely deliver benefits for stakeholders?
- I would like to ask what is the best form of disseminating outcomes and results to those that often don't like attending conferences and seminars to hear such scientific innovation. Would they rather listen or see in action the topics of discussion and how they would be most comfortable in providing feedback.
- Is it important in Europe to articulate environmental and social sustainability ? What kind of innovation can make the difference for environmental and social sustainability ?
- Advise on outcomes and outputs of our project - ask precisely for private partners linked with them who can be interested parties to exploit / validate our results

Questionnaire 2: Mid-term survey December 2018

The purpose of this second questionnaire is the evaluation of the stakeholders involvement at the mid-term of the projects:

1. How do you rank the stakeholders regarding their contribution to the project? How do you rate the general involvement of the stakeholders in your project?
2. Which stakeholders are **difficult to reach**, why?
3. Have you involved **more stakeholders** in addition to those mentioned in the first survey? Would you like to add new stakeholders? Why?

1. How do you rate the general involvement of the stakeholders in your project?

The majority of the respondents answered that stakeholders involvement was quite successful (31) or very successful (26)

2. Which stakeholders are difficult to reach?

Retailers	family farms
farmer associations	farmers
Test Achat	Policy makers
Beekeepers	consumer representatives
NGO	Inra not directly involved with stakeholders
Lambs breeding of the same breed in intensive and Meat processing industry	
Lambs breeding of the same breed in intensive and local associations	
Smaller farms with older equipment	other farmers
Agrifood industry	Maternal Sheep Group
some technology providers	French Pork and Pig Institute
Farmer groups	Commercial sheep farmers
Consumer organisations	Slaughter houses

2. Why? And how can we get them more involved

- lack of time (the given date)
- Because they have fear of immunocastration
- Contacts for this outreach have not been identified yet
- not easy to transfer new approaches to them
- Difficult to contact them to involve in Focus group → no response
- Less availability/schedule issues
- Due to data protection/data privacy no official registers could be used
- No stakeholders are involved for CAU Kiel in particular
- There will be more interactions but we have had farmers/politicians/advisors visits
- Internal (their) "political" differences
- no interest in the subject no human resources devoted to it or no contact
- Partners reported difficulty with requesting too much data from farmers and sometimes language barriers
- Breeds that are raised in intensive are not suitable for extensive system and vice versa

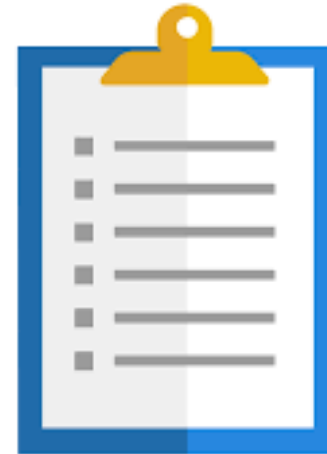
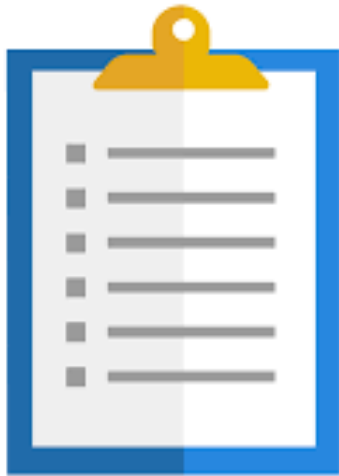
2. Why? And how can we get them more involved

- Indifferent regarding production systems, economical impact unclear
- Farmers lack of knowledge, no commercial benefit is seen
- Farmers are sometimes reluctant to participate in interviews due to time constraints and relevance
- they are busy and located in remote areas
- This group is made up of farmers
- I guess the running of their business did not always fit SusShep
- We need a few to invest time in something which is of long term benefit to all
- They have imposed restrictions on the data they promised to the consortium
- Time and distance to meet
- Difficult to get them to feed into the project in a meaningful way due to the diversity of project
- Because they are not very knowledgeable about pig farms

3. Who are the stakeholders so far?

Two lists will be delivered:

45 European stakeholders (identified by SusAn & projects) 179 National/local stakeholders (identified by projects)



SusAn stakeholders



4. Guiding principles when engaging stakeholders

1. Responsive and reciprocal

Engagement is a two-way process and appreciate the benefits of mutual learning. The stakeholders' contribution will improve the outcomes of SusAn and its cofunded projects.



4. Guiding principles when engaging stakeholders

2. Impartial and objective

Make efforts to ensure information is accessible and objective and facilitate engagement with all stakeholders who have an interest.



4. Guiding principles when engaging stakeholders

3. Open, transparent and trusting

Provide information in a way that stakeholders can participate in a meaningful way and will foster a culture of sharing ideas.



4. Guiding principles when engaging stakeholders

4. Open listening

Value stakeholders and use their input to improve policy and outcomes. Actively listen to stakeholder needs, seeking to understand how they want to be engaged, based on their particular circumstances.



5. Team exercise

Step 1: Think of 2 examples of stakeholder engagement from your project, preferably:

- an example in which stakeholder engagement has gone well (**success story**)
- an example where it has been less smooth (**failure**).



- On separate post-its, write down **all factors** (one factor on each post-it) that, according to your experience, explains the success/failure of stakeholder engagement for those particular examples.
- **15 min individual preparation time**

Think creative and practical!



The following aspects must be addressed:

- **Why stakeholder engagement?** What are your aims and objectives of the engagement? What are the benefits for the research team? and, for the stakeholders themselves? Have you analysed it before engagement?
- **When did you engage them?** At which stage of the project, at the very start? Did you engage them on a regular basis or only once? Duration (whole day, evening, ...)? Accessibility?
- **How did you engage them?** Were they somehow rewarded for engagement? Catering? Follow-up activities? How did you invite them personally by mail, phone, through intermediaries? Did you know them already or not? Which methods did you use to meet your objectives (workshop, interviews, focus group, brainstorm, ...)?



Step 2: Exchange between participants

- Each participant shares his/her examples/stories and afterwards the post-its are clustered on 2 flaps

You will have the opportunity to ask questions to further deepen together with the narrator why something has led to success or not.

- Are there are other reasons that have not yet been discussed that could have an impact on stakeholder engagement??



Win-win

Why / when / how

Successful

Good practices (Do's LIST)

Advisory Services

Who?

Farmers

- Focus of successful engagement
 - Emphasis of success to partners
 - Advantage of success from first of success with
- From the start
 - Request planning of the start
 - Supplying from start
 - Investment as success
- From the start
 - Involvement from the start who want to progress
 - Involve them in the start
- Company
 - Personal connections make engagement easier
- Further development of ideas
 - DIFFERENT POINT OF VIEW (As an enrichment)
 - More "PRACTICAL" APPROACH
 - Study visits (others)
 - Learning (others)
- Context
 - context established through initial position
 - Data available to whole context
 - General thinking management
 - awareness of future trends
 - "preparing for the future"
 - clear understanding of potential benefits in the start and second start
 - Access of data ownership issues
 - share right to data
 - need help with deeper analysis

Product developers

- Engaging product developer
 - they were happy to be included in a project that did other practical trials
 - invested resources in
- Company
 - Success Flow the start
 - Success Flow the start
 - Success Flow the start
 - Success Flow the start

Companies

- Engaging product developer
 - they were happy to be included in a project that did other practical trials
 - invested resources in
- Company
 - Success Flow the start
 - Success Flow the start
 - Success Flow the start
 - Success Flow the start
- Resources
 - PEOPLE
 - STRUCTURES
 - ANIMALS
- GATHER DATA FROM FIELD (Comparison / Factors)

- AS ONLY
- KNOW PERSONALLY
- GOOD INTERACTION
 - EMAILS
 - PHONE
 - MEETINGS
- GOOD PREPARATION
 - PROFILES
 - PRESENTATION
 - EXCHANGE IN
- HAVE } TIME TAKE

- IPS ASSES - Additional point
- COMPARE FOR EQUIPMENT
- PROVIDE FOR OTHER BODIES
- Support
- Company support help for practical point

Not very successful

Not good practices (DON'T LIST)

Complex

Complex

Extreme Sizes

Famous (Association)

Complexity of the system
Complexity of the system
Complexity of the system

Complexity of the system
Complexity of the system

Complexity of the system
Complexity of the system

Complexity of the system
Complexity of the system

Complexity of the system
Complexity of the system

Complexity of the system
Complexity of the system

Complexity of the system
Complexity of the system

Complexity of the system
Complexity of the system
Complexity of the system
Complexity of the system
Complexity of the system

Complexity of the system
Complexity of the system

Complexity of the system
Complexity of the system

Complexity of the system
Complexity of the system

Complexity of the system
Complexity of the system

Complexity of the system
Complexity of the system

Complexity of the system
Complexity of the system

Complexity of the system
Complexity of the system

Complexity of the system
Complexity of the system

Step 3: Follow up

- **Summary of the most important conclusions:** what have we found that is important to engage stakeholders?
- **Think together on the follow up actions:** lessons learnt and best practices to put into practice in the projects (do's list)?



ESKERRIK ASKO

THANK YOU FOR YOUR ATTENTION

ERA-NET
SUSAN

